

WELLNESS

Wellness massages and procedures	RP	BEH	CUR	LCA	Min.	CZK
Aroma massage – full body	•	•	•		50	1 040
Hot stones massage – back			•		40	650
Hot stones massage	•	•	•		60	1 240
Indian antistress head massage	•	•	•		20	590
Flasks		•	•		20	520
Vulkan pack (thermomineral compress)			•		20	300

Special massages and procedures	RP	BEH	CUR	LCA	Min.	CZK
Thai massage – Classic Thai	•			•	60	1 390
Thai massage – AromaOil	•			•	60	1 490
Thai massage – Herbal	•			•	60	1 590



Aquacenter AGRICOLA

Relaxation and fun for the whole family...

After an active day in the mountains, relax in the Aquacenter Agricola with a swimming pool, water slide and whirlpools, visit the amazing complex of saunas inspired by the local mines or pamper yourself with wellness massages.

OUTPATIENT TREATMENT

Radon baths and further spa treatment are available also for the walk-in visitors. These are offered in the Spa center Agricola, where a previous reservation is necessary.

INFORMATION TO THE OUTPATIENT TREATMENT:

Monday – Sunday: 9 – 20 h.

Lázeňské centrum Agricola

T. G. Masaryka 403, 362 51 Jáchymov

+420 353 836 111 / Direct hotel-phone line 6111, agricola@laznejachymov.cz

www.axxshotels.com/spa-center-agricola

Léčebné lázně Jáchymov a. s.

T. G. Masaryka 415, 362 51 Jáchymov

<https://www.axxshotels.com/radonspa-jachymov>

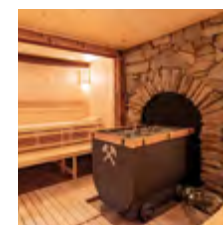
1ST WORLD'S RADON SPA JACHYMOV

AXXOSHOTELS

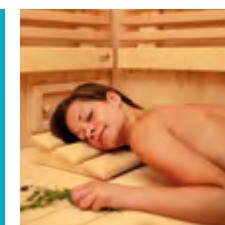


SPA
JÁCHYMOV

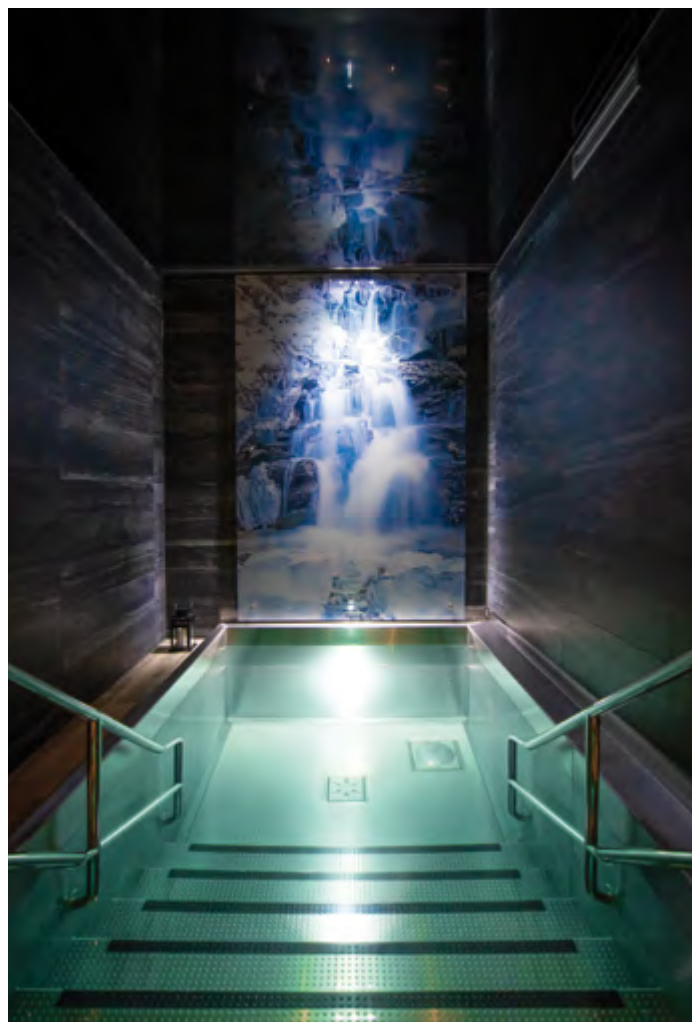
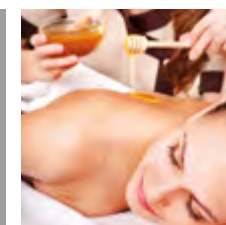
PRICELIST OF PROCEDURES



THE FIRST
RADON SPA
IN THE WORLD



Valid from
1. 2. 2024



TREATMENT PROCEDURE

Radon bath			RP	BEH	CUR	LCA	Min.	CZK
Radon bath - one for try			•	•	•	•	15+10 ⁽³⁾	1 100
Radon bath ⁽¹⁾	L ⁽²⁾		•	•	•	•	20+10 ⁽³⁾	1 100
10 radon baths with dry wrap (Package incl. medical prescription for walk-in clients, available in given hotels)	L	B	•	•	•			11 000

(1) Radon bath as a trial, or in a package of 10 treatments for walk-in clients

(2) only one trial radon bath is bookable without medical prescription

(3) dry wrap after a bath

Rehabilitation			RP	BEH	CUR	LCA	Min.	CZK
Individual exercise in a gym	L	V	•	•	•		15	590
Individual exercise in pool	L	V	•	•			20	590
Group therapeutic exercise in pool	L	M	•	•	•		20	260
Individual LTV - on neurophysiological basis	L	V	•	•	•		15	700

Reflex therapy			RP	BEH	CUR	LCA	Min.	CZK
Massage reflective and fibrous	L	V	•	•	•		15	710
Soft tissues techniques	L	V	•	•	•		15	710

Physiotherapy			RP	BEH	CUR	LCA	Min.	CZK
Diadynamik	L	M	•	•	•		max. 10 ⁽¹⁾	250
Interferential currents	L	M	•	•	•		10	250
Träbert currents	L	M	•	•			10	250
Excitatory currents	L	M		•			max. 10 ⁽¹⁾	250
Magnetic therapy	L	M	•	•	•		20	360
Short-wave diathermy	L	M		•			15	290
Ultrasound therapy / oil	L	M	•	•	•		max. 10 ⁽¹⁾	280
Ultrasound therapy / water	L	M	•	•	•		max. 10 ⁽¹⁾	250
Vacuum-compression therapy	L	M	•				30	600
Laser – local application / stylus	L	M		•	•		max. 5 ⁽¹⁾	320
Laser – larger surface / scanner	L	M	•	•	•		max. 10 ⁽¹⁾	360
Laser – larger surface / shower	L	M	•	•			max. 5 ⁽¹⁾	440
Biolamp		M	•	•	•		max. 10 ⁽¹⁾	180
Cryotherapy / pack	L	M	•	•	•		10	170
Cryotherapy / instrumental	L	M	•	•			5	320

(1) length of the treatment is determined by the physician

Brachyradium therapy			RP	BEH	CUR	LCA	Min.	CZK
Brachyradium therapy compilation by physician	L		•	•	•			1 370
Brachyradium therapy application on 1 field	L					Radiology pavilion		1 800

TREATMENT PROCEDURE

Hydrotherapy			RP	BEH	CUR	LCA	Min.	CZK
Bubble bath without wrap		V	•	•			15	420
Bubble bath with wrap		V	•				10+10 ⁽¹⁾	450
Bubble bath with additive without wrap		V		•	•		15	510
Bubble bath with additive & wrap		V	•				10+10 ⁽¹⁾	530
Additive bath with wrap		V	•	•	•		20+10 ⁽¹⁾	530
Carbon bath with wrap		V	•	•	•		20+10 ⁽¹⁾	650
Carbon bath with solfatan & wrap		V			•		20+10 ⁽¹⁾	710
Carbon bath with peat extract & wrap		V			•		20+10 ⁽¹⁾	710
Hydroxeur		V	•	•			15	420
Whirling bath - upper limbs		M	•	•	•		10	280
Whirling bath - lower limbs		M	•	•	•		10	300
Scottish shower	L	V			•		5 – 7 ⁽²⁾	600

(1) dry wrap after a bath

(2) length of the treatment is determined according to the height of the person

Massages			RP	BEH	CUR	LCA	Min.	CZK
Classical manual massage – partial		V	•	•	•		15	590
Classical manual massage – full body			•	•	•		45	890
Foot reflexology massage with foot bath			•	•	•		30+10	780
Underwater massage (manual)		V	•	•	•		10	550
Lymphatic manual massage	L	V	•	•	•		60	1 030
Lymphatic drainage – instrumental	L	M	•	•	•		30 – 40 ⁽¹⁾	620
Multi massage on device		M	•	•			15	280
Velus Jet – dry massage bath		M		•			15	300

(1) according to the programming of the device involved

Thermotherapy			RP	BEH	CUR	LCA	Min.	CZK
Paraffin wrap (hands)		M	•	•	•		20	360
Solux (Infrared light)		M	•	•	•		max. 15 ⁽²⁾	120

ADDITIONAL AVAILABLE PROCEDURES

Performed by physician at patient's request			RP	BEH	CUR	LCA	Min.	CZK
Medical check-up			•	•	•		30	1 020
Medical consultation			•	•	•		25	400
Local injection			•	•	•			250
Administrative tasks			•	•	•			160
Physician's visit in the patient's room			•	•	•			700
Performed by nurse			RP	BEH	CUR	LCA	Min.	CZK
EKG	L		•	•	•			710
Blood test	L		•	•	•			250
Bandage	L		•	•	•			180
Injection application	L		•	•	•			240
Dressing and re-bandage of wounds			•	•	•			400
Blood pressure, pulse & temperature measurement			•	•	•			100
Glycemia measurement - by glucometer			•	•	•			80

TREATMENT PROCEDURE

Other therapy			RP	BEH	CUR	LCA	Min.	CZK
Dry carbonated bath – gaseous		V	•	•	•		30	430
Oxygen therapy		M	•	•	•		60	280
Oxygen therapy			•	•	•		120	430
Oxygen therapy (60 Min.) 10 procedures		B	•	•	•		60	1 940
Oxygen therapy (120 Min.) 10 procedures		B	•	•	•		120	3 020
Inhalation of aerosol – individual			•	•	•		10	190
Gas injections (1 application)	L	M	•	•	•			400
Acupuncture (physician) – first session	L			•			20–30 ⁽¹⁾	650
Acupuncture (physician) every other session	L			•			20–30 ⁽¹⁾	520
Auriculotherapy (physician) – first session	L			•			10–20 ⁽¹⁾	520
Auriculotherapy (physician) every other session	L			•			10–20 ⁽¹⁾	390
Salt cave – 1 session						•	45	140
Salt cave season ticket 10 session		P				•	45	1 150

Other treatment

Nordic walking with instructor 1 group lesson						•	45	150
Pilates – 1 group lesson			•			•	60	150
Yoga – 1 group lesson			•			•	75	150
Physical activities for health season ticket 10 lessons (nordic walking, yoga, pilates)		P				•	45 – 75	1 300
Aquafitness – 1 lesson						•	60	150
Aquafitness – season ticket 10 lessons		P				•	60	1 300

Further service outside the pricelist available (i.e. fitness lesson, solarium).

(1) length of the treatment is determined according to the diagnosis

Changing procedures

Change of the treatment (date/time)								250
-------------------------------------	--	--	--	--	--	--	--	-----

Prices are in CZK including VAT. All rights reserved.

Explanations

L	treatment available with medical prescription only	P	season ticket (validity limited)
V	major treatment	RP	treatment provided at the Radium Palace
M	minor treatment	BEH	treatment provided at the Běhounek
B	treatment package	CUR	treatment provided at the Complex Curie
AB	treatment package for walk-ins, not accommodated in the spa facilities	LCA	treatment provided at the Spa Center Agricola